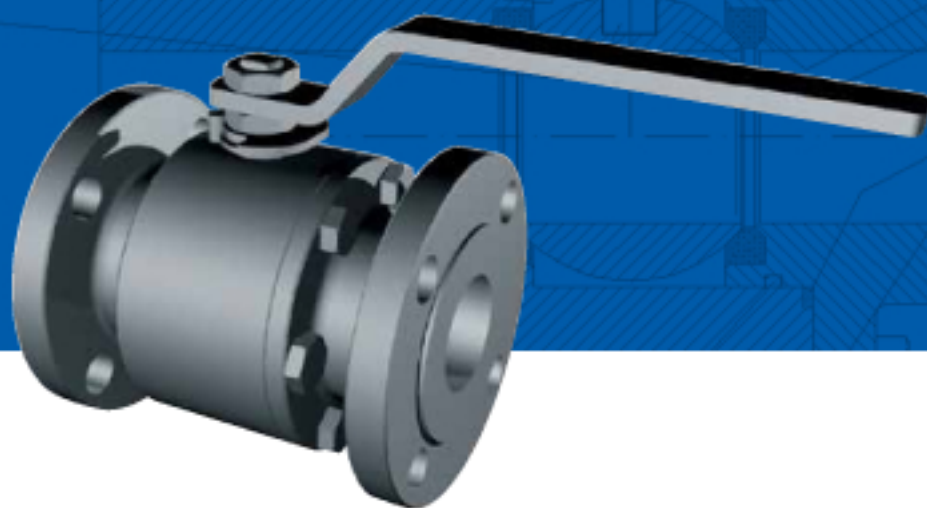


BF150



FLOATING BALL VALVE / SIDE-ENTRY / BOLTED CONSTRUCTION



Range of Production:

- SIZE from ½" to 6" (based on the pressure class)
- PRESSURE CLASS
ANSI 150-300-600-900-1500-2500
OTHER standard or non-standard pressure classes are optional ON REQUEST

Standard Features:

- Split body, 2 or 3 piece construction
- Full or Reduced bore
- Bi-directional
- Soft seat
- Bubble tight seal
- Automatic body cavity pressure relief
- Lever or gear operated (depending on size and class)
- Anti-blow out stem
- Antistatic device
- Fire Safe design
- O-Ring on primary sealing - Graphite on secondary sealing
- Flanged ends (RF – RTJ)

Available Features:

- Metal to Metal seat
- Lip-seal on primary sealing
- Graphite packing on stem sealing for FET
- Locking device
- Welded or clamped ends
- Extended stem
- Pneumatic actuator, single or double action
- Hydraulic actuator
- Electric actuator
- Gas over oil
- Bare stem (top-mounting flange to ISO 5211)

